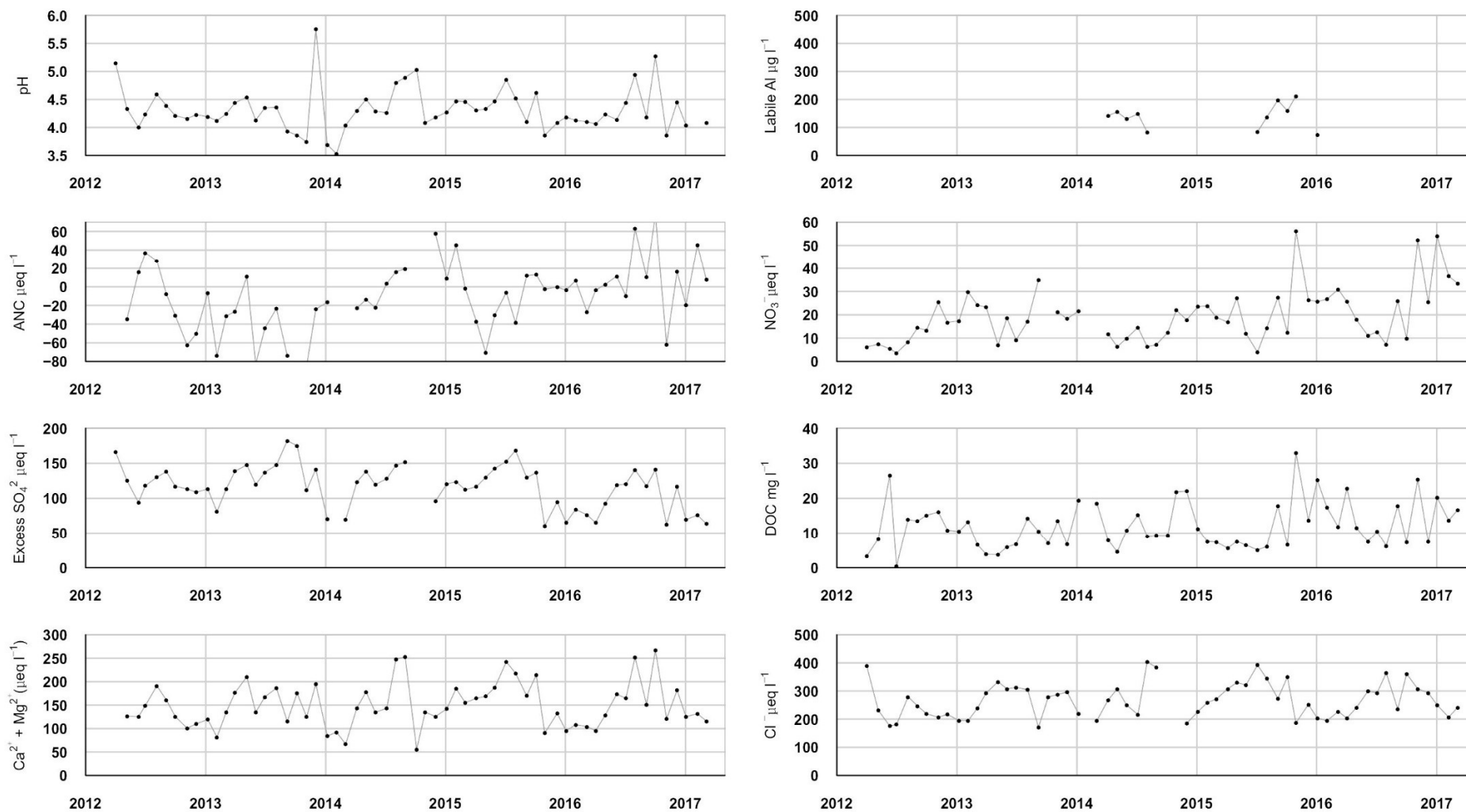


## 6.24. Danby Beck

### 6.24.1. Spot sampled chemistry data



$\mu\text{eq l}^{-1}$ , $^*\mu\text{g l}^{-1}$ , $^{**}\text{mg l}^{-1}$	pH	ANC	Ca <sup>2+</sup>	Mg <sup>2+</sup>	Na <sup>+</sup>	K <sup>+</sup>	*Soluble Al	*Labile Al	Cl <sup>-</sup>	*SO <sub>4</sub> <sup>2-</sup>	xSO <sub>4</sub> <sup>2-</sup>	NO <sub>3</sub> <sup>-</sup>	**DOC
<b>Mean 14-15</b>	4.46	NA	86.53	72.02	258.06	10.30	NA	NA	277.14	153.05	125.91	14.52	11.31
<b>16-17 mean</b>	4.15	NA	84.23	74.64	269.99	10.69	NA	NA	274.60	127.32	98.53	25.99	13.90
<b>16-17 std dev</b>	0.75	NA	34.16	19.43	42.33	1.99	NA	NA	53.89	34.70	30.47	15.73	6.58